



SAM MT

Multi Touch
Next generation Truck Vehicle Equipment

Changing the ways to operate a tank truck
— one point of contact



SAM MT Multi Touch



Next Generation of OTC has the focus on standby and flexibility

The heart in the solution is the unique and powerful SAM MT® (SAM MULTI TOUCH) which give the driver only one point of contact when he operate the truck.

The SAM MT® is developed to control all kind of equipment and components to be found on the truck fx: Cross over prevention (COP/NoMix), Sealed delivery system (SDS/SPD), Liter Counters (LC), Dip Sticks etc, combined with the unique Truck control system SafeCon®.

The SAM MT® is a module built system with focus on flexibility and possibility for customizing on OTC solutions. The SAM MT® is as standard using Microsoft Windows.

The SAM MT® can be delivered with the next generation of SafeCon®, that has been developed as an integrated part of the system.

The SAM MT® can be delivered ATEX approved to be placed in zone 1 and 2.

System Functionality

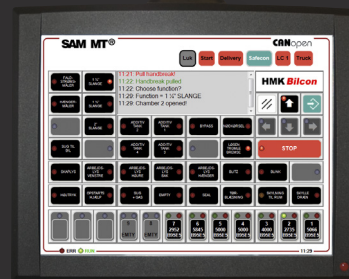
— one point of contact

The SAM MT® makes it possible to operate as requested from customers, as well on new trucks as on existing trucks. All planned operations will/can be operated and controlled by the SAM MT®. To change from one operation/setup to another is always only one touch away.

ONE TOUCH



ONE TOUCH

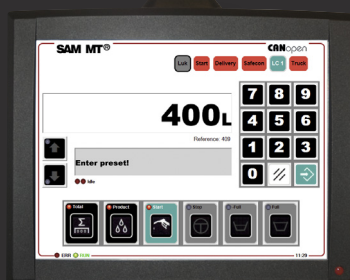


ONE TOUCH

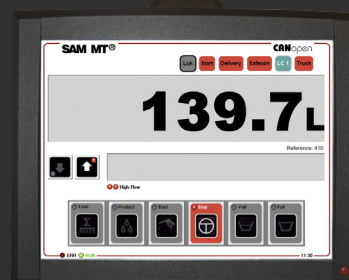


The display simple change to the defined screen (all screens can be customized) after which the functions can be operated and controlled by the touch screen display. All kind of data/software can be received, saved, loaded and handled directly to/from the SAM MT® or via a control unit in the cabin.

ONE TOUCH



ONE TOUCH



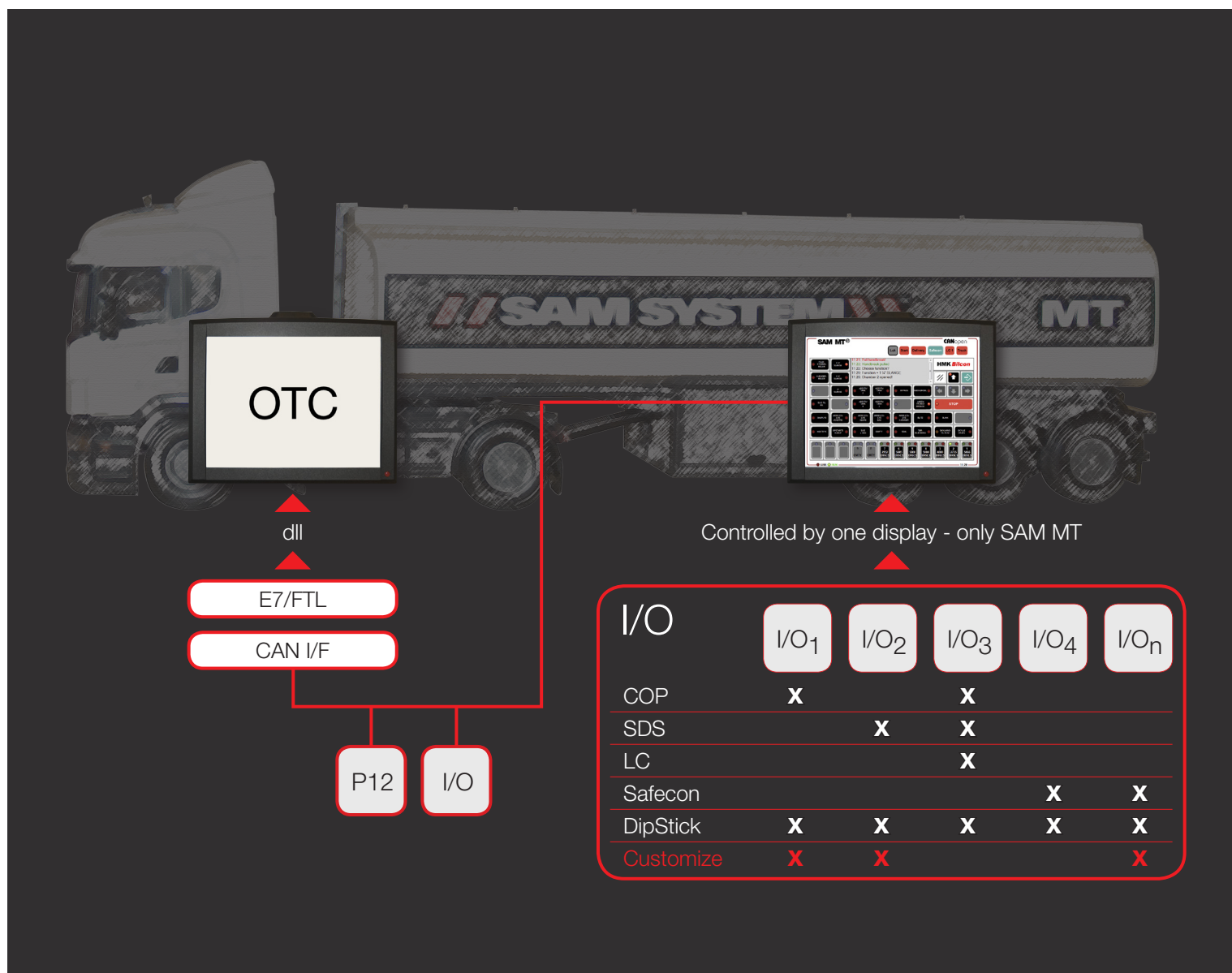
ONE TOUCH



The SAM MT® flexibility. Save space, weight, money and time:

- Reducing time used for fitting and maintenance.
- All operations takes place form a single Display Key Pat
- Only ONE POINT of contacts
- User-friendly graphic display build for rugged envirements
- Interfaced to existing equipment on the truck if requested.
- 2-Way Communication with Back Office System

// SAM MT Multi Touch



Installing, instructions and manuals

Installation: SAM-SYSTEM A/S will deliver installation instructions/manuals for the complete system solution. These instructions include the necessary informations for mounting, connecting and adjusting the whole setup. By following the instructions we secure that the ATEX, MID or national demands for the tank truck will be fulfilled and follow the agreed approvals.

SAM-SYSTEM A/S is going to offer a specific installation course for all individual workshops there are going to maintain the equipment on the trucks. The content of the course will be with focus on installation, test and troubleshooting. Also the ATEX and MID aspect will be covered.

Approved solutions

— one point of contact

Intelligent Control Unit

The SAM MT® can be delivered with an ATEX approval.

Newest Touch Screen technology

By working with one of the leading producer in Europe we are always in front on the used technology.

Powerful industrial PC

A rugged and powerful industrial PC with a User-friendly graphic display ready for future modules.

The SAM MT® is a module built system with focus on flexibility and possibility for customizing.

Recieve and send data

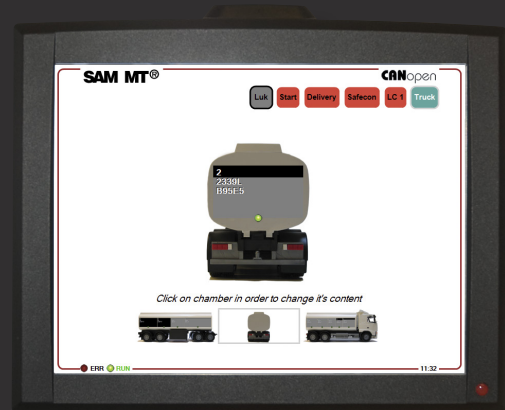
Components/solutions from other suppliers can be adapted to the SAM MT® system if the actual supplier approves it.

Connection via one or more of following possibilities:

- USB
- SmartCard
- GPS
- GPRS
- WLAN
- Bluetooth
- Infrared port

Options:

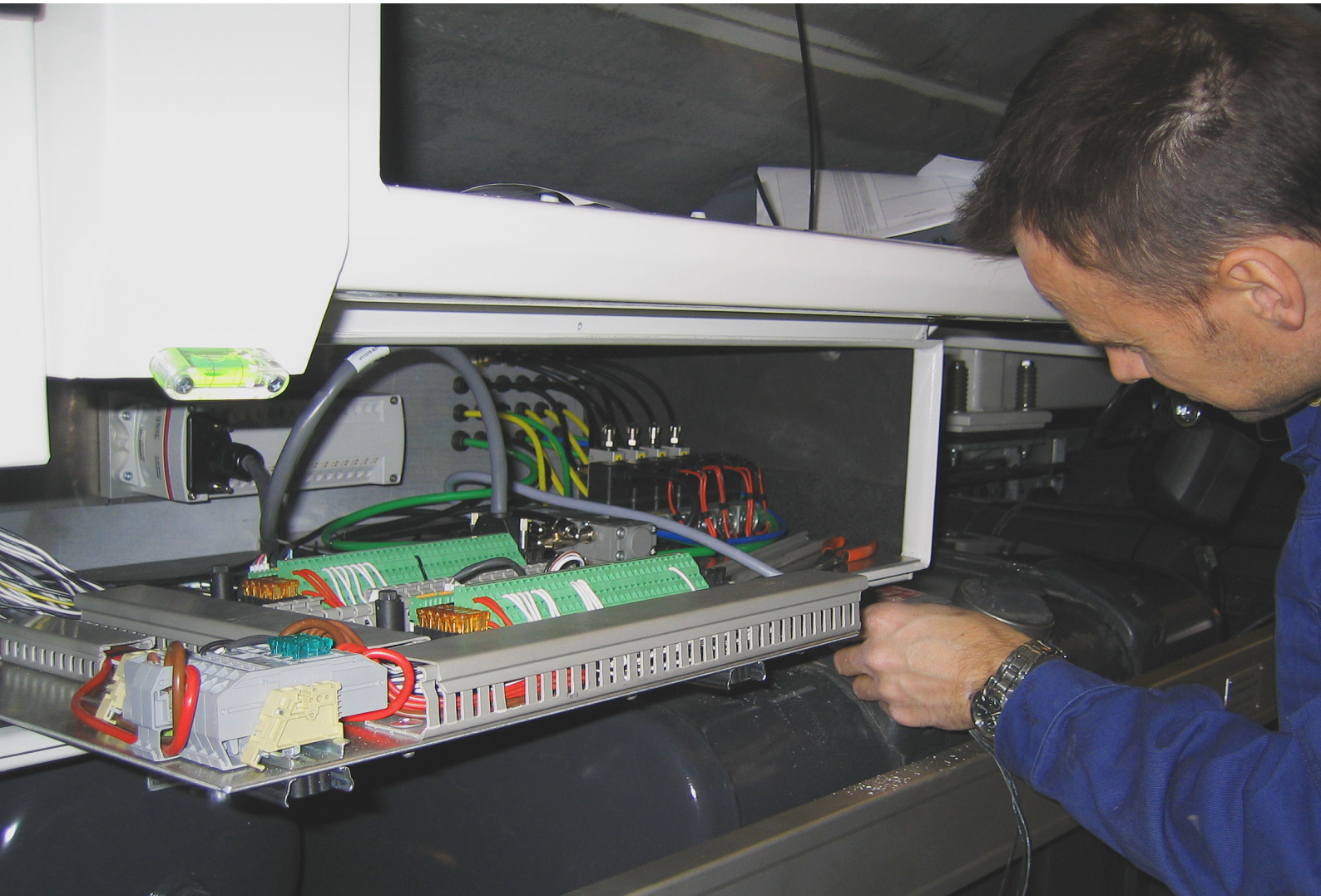
- SafeCon
- Geo-tagging/tracking
- Event-tagging
- Business intelligence
- Customized for existing equipments
- Slave for the OBC



A SAM solution with focus on:

- Data reliability
- Preventing mixing products
- Logistics
- Cost
- Traceability
- Flexibility (extra or different components)
- Prepared for the future
- Business intelligent
- System functionality
- MID
- ATEX

// Service minded concept and SafeCon®



The SAM MT® - familiar to all truck builder, workshops etc.

The SAM MT® is built up by components familiar to all truck builders, workshops etc. and is a Service minded concept: By mainly using standard CANopen bus components it means that expansions and new functions easily can be adopted. Soft Ware updates changes, services etc. will be handled online, directly from our SoftWare ingeniers desk, fast and effectively.

SafeCon® - Electronic control system for tanktrucks.

SafeCon is an electronic control system designed and developed to simplify the complicated pneumatic control systems, which normally is a part of a tanktruck. SafeCon improve the reliability by replacing a large part of the pneumatic and electrical control systems on the tanktruck.

SafeCon replaces the opening gears the Manuel product selector and up to approx. 80% of all pneumatic valves on the tanktruck. SafeCon also control working light, cabin light on both tractor and trailer. Also the lift shaft is activated via the SafeCon system. SafeCon can control the majority of automotive technical features of the tanker.

Functional solution

— one point of contact

System approvals

Sam-System a/s has experience and knowledge on OTC systems and components approvals regarding the:

- MID approvals
- ATEX approvals
- National approvals

Sam-System a/s is working with above mentioned approvals over all Europe and have been used as an adviser at our costumers and suppliers.

Sam-System a/s will take care of all necessary approvals on involved OTC system solution.

Sam-System a/s can offer one of the highest expertises in Europe on system and components approvals.

Today Sam-System a/s is the owner of a number of MID systems certifications that make it possible to upgrade from National approvals when upgrading existing equipment. This setup is minimizing the cost to upgrade existing approvals.

Measuring systems installed after January 1st 2016 has to be MID certified according to the MID Directives. Also upgraded systems has to be certified.



SAM MT – Trailer options:

- Option 1: Driving Stock.
- no equipment mounted on the trailer.
- Option 2: CAN Bus mounted on trailer.
- controlled by SAM MT on the Truck
- Option 3: CAN Bus mounted on trailer.
- controlled by SAM MT on the Truck via P12 module on Trailer or via remote Control
- Option 4: SAM MT mounted on Trailer





The ability to listen...

SAM-SYSTEM A/S is certified according to ISO 9001: 2008 and ATEX 2014/34/EU, which allows us to develop, manufacture and sell highly complex solutions for use in hazard environment.

In +35 years we have sold, customized and implemented electronic tank-fleet systems to global oil companies like:

- Statoil
- Shell
- Q8
- OK
- SKANOL
- BP
- Texaco
- Uno-X / din-X

just to mention a few.

These systems have been installed by our very experienced staff all over Northern Europe. Even in the USA we have systems running, delivering petrol and diesel every day.

The core capability of our company is the ability "to listen". Over the years we have developed very strong, long-lasting relations based on our ability to listen.

This ability is the most important competence in our company – and at the same time the most difficult to copy. Based on this ability we develop the customized solution required, educate the people involved and implement the system in a live organisation.

Get in touch

Sam System A/S
A.C Illumsvej 31
DK — 8600 Silkeborg

Tel: +45 8798 1100
info@sam-system.dk



Find out more by visiting our website
www.sam-system.dk